

ECO FRIENDLY FABRICS

Maintain the performance and feel of our high-quality shading solutions with a renewable alternative. Eco friendly fabrics are developed with sustainable materials that provide a reduction in greenhouse gas while preserving the benefits and luxury of traditional fabrics.



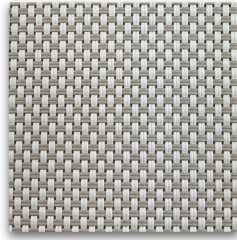
SHEERWEAVE 4400, 4000, 4100

PHIFER

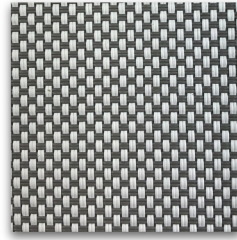
3% 5% 10%



Eco Chalk



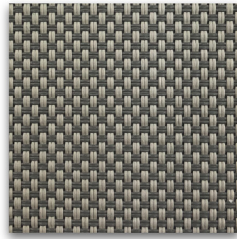
Eco Alabaster



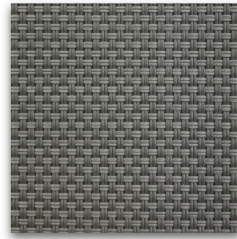
Eco Granite



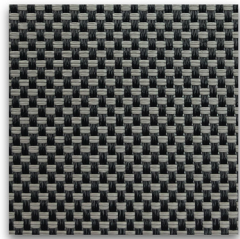
Eco Pebblestone



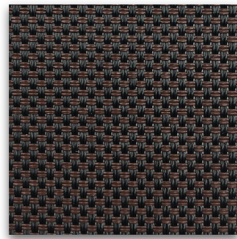
Eco Greystone



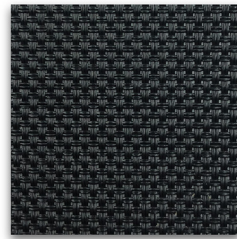
Eco Pewter



Eco Ash



Eco Tobacco



Eco Ebony

4400 = \$ \$. . 4000 = \$ \$. . 4100 = \$. . .

STYLE:

Solar/Eco

OPENNESS FACTOR:

4400 = 3% 4000 = 5% 4100 = 10%

COMPOSITION:

25% PES, 75% VINYL

UV BLOCKAGE:

3% = Approx. 97% | 5% = Approx. 95% | 10% = Approx. 90%

WEIGHT:

3% = 19.9 oz. | 5% = 18.0 oz. | 10% = 16.7 oz.

THICKNESS:

3% = 0.034 in. | 5% = 0.032 in. | 10% = 0.032 in.

WIDTH:

3% = 126 in. | 5% = 126 in. | 10% = 98 in.

FIRE CLASSIFICATION:

NFPA 701

NFPA 101

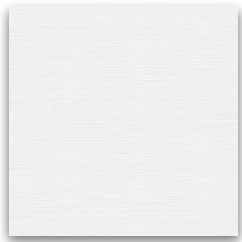


*Due to the technical limitations of digital cameras and inconsistencies of display monitors, the characteristics and colors of the fabrics seen on your screen may appear different than the actual product. We will be happy to provide samples of our products upon request.

EKO 50

Light Filtering

coulisse
since 1992



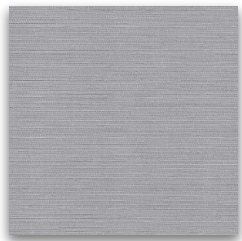
Snow White



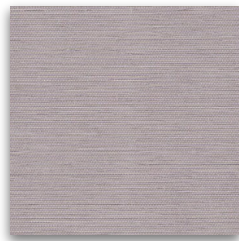
Pearled Ivory



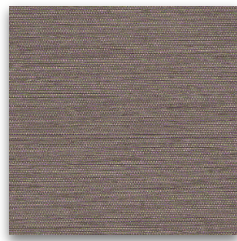
Pale Khaki



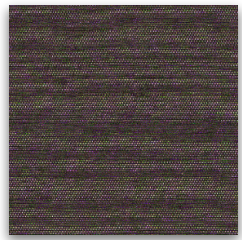
Limestone



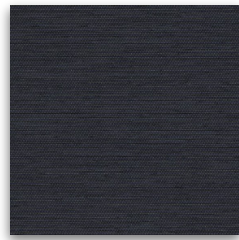
Silver Cloud



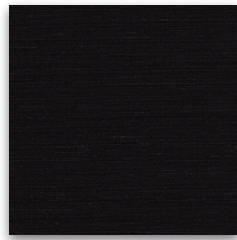
Atmosphere



Cinder



India Ink



Caviar

STYLE:

Decorative/Eco

OPENNESS FACTOR:

Light Filtering

COMPOSITION:

100% PES

WEIGHT:

6.2 oz.

THICKNESS:

0.017 in.

WIDTH:

82 in.

FIRE CLASSIFICATION:

NFPA 701



\$\$\$. .

*Due to the technical limitations of digital cameras and inconsistencies of display monitors, the characteristics and colors of the fabrics seen on your screen may appear different than the actual product. We will be happy to provide samples of our products upon request.